

**Waterbrook I
Executive Housing**

Features

- New 3 Bedroom 2.5 bath House with Study
- Sophisticated + classy neighborhood
- One of the most sought after properties on the East Side
- 8 foot front door entry
- Warm & Welcoming interior
- Highly secure Gated Community
- Low maintenance Yards
- Garage with remote door opener
- Garage Key Pad
- Original Art Work
- Spacious Kitchen packed with appliances
- 3rd bedroom with Custom Bedding and window coverings with Twin Daybed or Queen bed
- Each room is tastefully decorated
- Washer & Dryer / Dyson Vacuum
- Fully Fenced Back Yard
- Patio / Deck with BBQ
- Starter Cleaning / Laundry Supplies
- All utilities included / High Speed Internet / Cable
- Sunny SW Corner location
- Gas Fireplace
- Easy Freeway Access

Presented by ITN Properties
Redmond, WA 98052
Contact: Sally Kernan
sally@it-network.com
(425) 497-8800

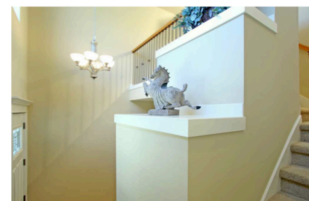
Home Away from Home
Everything you need down to the toothbrushes



Bothell, WA next to Country Village



Kitchen



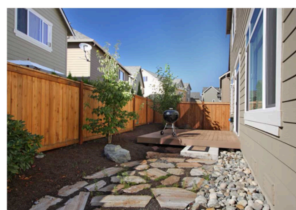
Entry



Great-Room



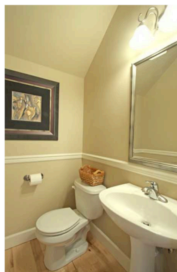
Dining Area



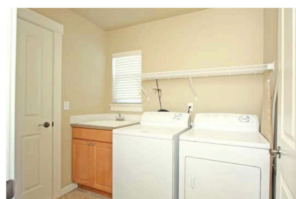
Backyard / Patio



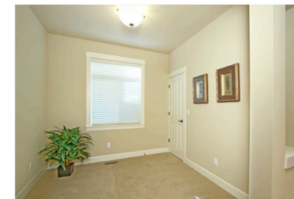
Master Bath



2nd Bathroom



Laundry Room



Hallway